

WELCOME FROM MANOR LAKE



Thank you for considering Manor Lake BridgeMill Assisted Living & Memory Care Community.

Each team member joins us in welcoming you to our community. We are pleased that you have chosen us as a potential home for yourself or your loved one. As you begin the search for an assisted living community, please look over this important information, take the time to tour our community, and obtain a feel for what sets us apart from other senior living choices.

We are dedicated to making your decision to move here one that you feel good about now and for years to come. We want to ensure that your life here is as productive, secure, and satisfying as possible. Please feel free to contact us with any other questions you may have and thank you for considering Manor Lake BridgeMill.

From your family at Manor Lake

ACTIVITIES & SOCIAL HIGHLIGHTS

EDUCATIONAL

You Be The Judge • Book Club • Documentary Series
Travel Club • Culture Exploration • Happy Hour

CREATIVE ARTS

Sewing • Knitting • Painting • Pottery
Jewelry Making • Wood Crafting • Scrapbooking

WELLNESS

Exercise Programming • Health Checks
Yoga/Tai Chi • Walking Club • Gardening
Music/Pet Therapy • Spiritual Services & Activities

ENTERTAINMENT

Live Music • Dramatic Readings • Trips & Outing
Recitals • Cooking Demonstrations • Intergenerational Activities

Manor Lake

Assisted Living & Memory Care

SERVICES & AMENITIES

COMMUNITY AMENITIES

We have created a comfortable and home-like neighborhood with everything you need at your fingertips.

No Annual Lease
Senior Friendly Exercise Room
On-Site Physical, Occupational & Speech Therapy
Personal Pendant Call System
Individualized Personal Safety Checks
Back Up Emergency Generator On Site
Concierge Services
Caring Staff On Site 24/7
24 Hour Nursing Oversight
Wellness Program
Medication Management
Pharmacy Services
Seasonal Menu
Private Dining Room Available
24 Hour Café Access
On-Site Beauty And Barber Salon

Deluxe Spa
Keyless Rooms And Building Access Allowing For Security
Individually Controlled Room Heat And Air Refrigerator
Basic Cable And Telephone Service
Wireless Internet
Easy Access Walk-In Shower With Safety Rails
Scheduled Transportation:
Doctors, Shopping, Entertainment
Full Social Calendar
Instructor Led Daily Exercise
Book Club
Movie Nights
Church Services

ADDITIONAL MEMORY CARE AMENITIES

Individuals who have received extensive training in Alzheimer's and other memory impairment, staff our community. Our staff understand that the needs of each resident are as unique as the individual themselves.

24 Hour Nursing Oversight
Caring Staff On Site 24/7
Assistance With Daily Living
Reminders And Cueing As Needed

Engaging Calendar Of Activities And Entertainment
Seasonal Menu
Snacks Throughout The Day

Manor Lake

Assisted Living & Memory Care

SAMPLE MENUS

CHEF SPECIALS

Breakfast

Eggs Cooked to Choice
Milk, Juice, Coffee or Tea
Fruit & Cereal of your choice

Lunch

Apple Pork Chops
Duchess Potato & Seasoned Asparagus
with a Wheat Roll
Cheesecake W/ Berries
Coffee, Tea or Milk

Dinner

Hearty Vegetable Soup
And Whole Wheat Crackers
Peanut Butter Brownie
Coffee, Tea or Milk

REGIONAL FAVORITES

Breakfast

Cinnamon French Toast
Milk, Juice, Coffee or Tea
Fruit & Cereal of your choice

Lunch

Chicken and Dumplings
with Herbed Green Beans
and a Wheat Roll
Apple Pie
Coffee, Tea or Milk

Dinner

Pulled Pork
with BBQ Sauce
and Wheat Bread
Red Velvet Cake
Coffee, Tea or Milk

Please note: This menu is just an example. More choices are available daily and throughout the month.

MEAL SCHEDULE:

Meals are served daily at your table in the Assisted Living and Memory Care Dining Rooms.



Breakfast

8:00am - 9:15am



Lunch

12:00pm - 1:15pm



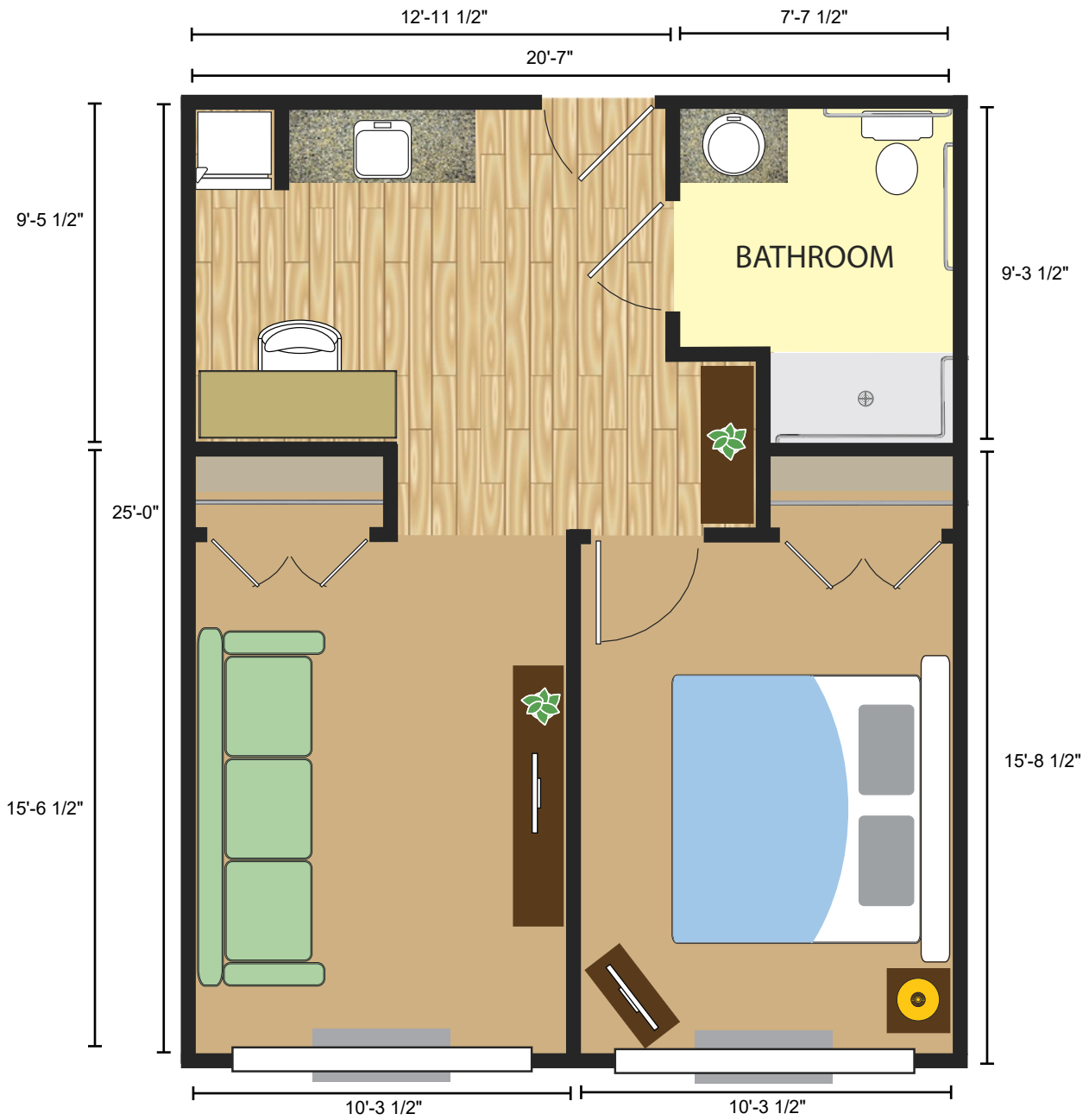
Dinner

5:00pm - 6:15pm

Manor Lake

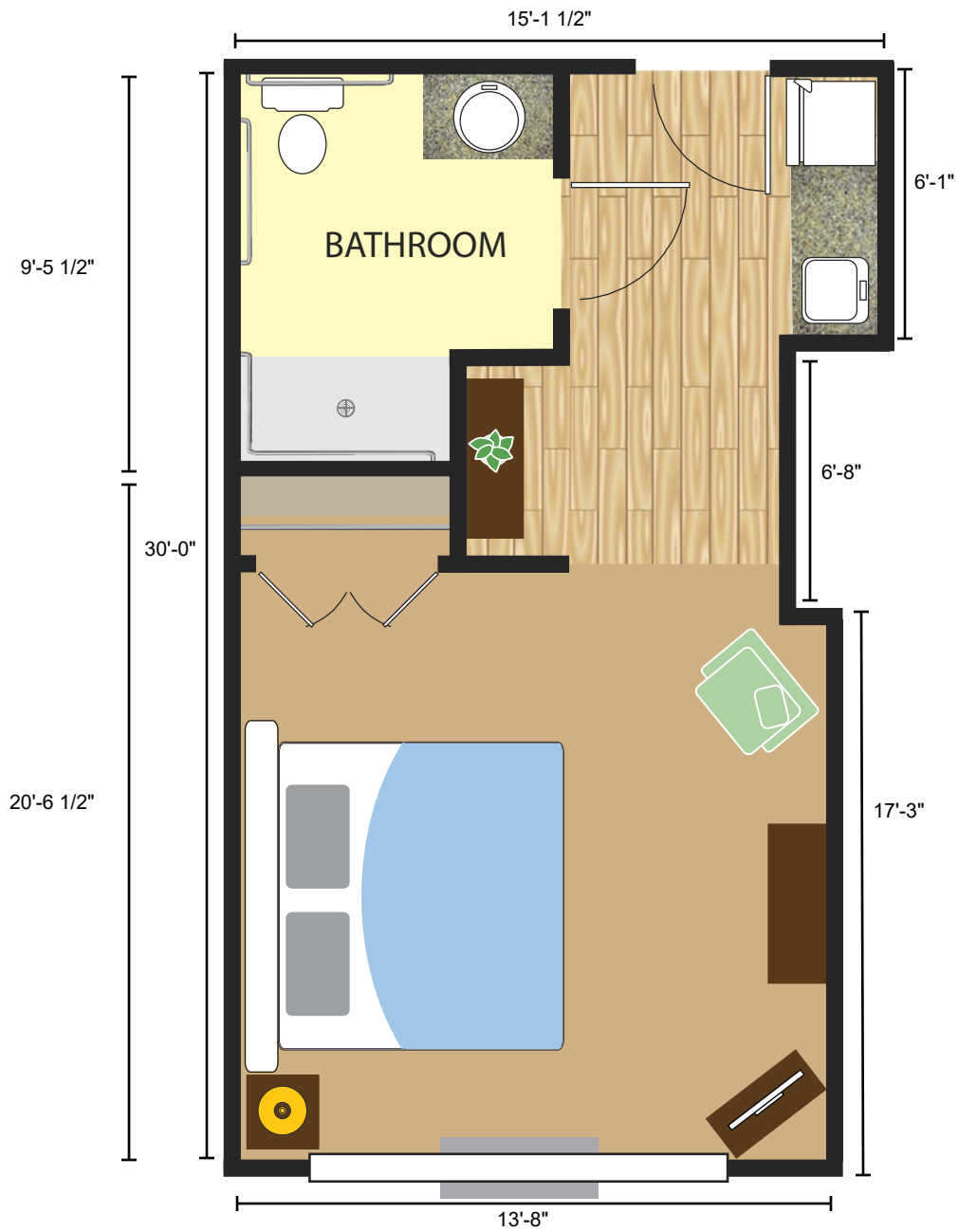
Assisted Living & Memory Care

FLOOR PLANS



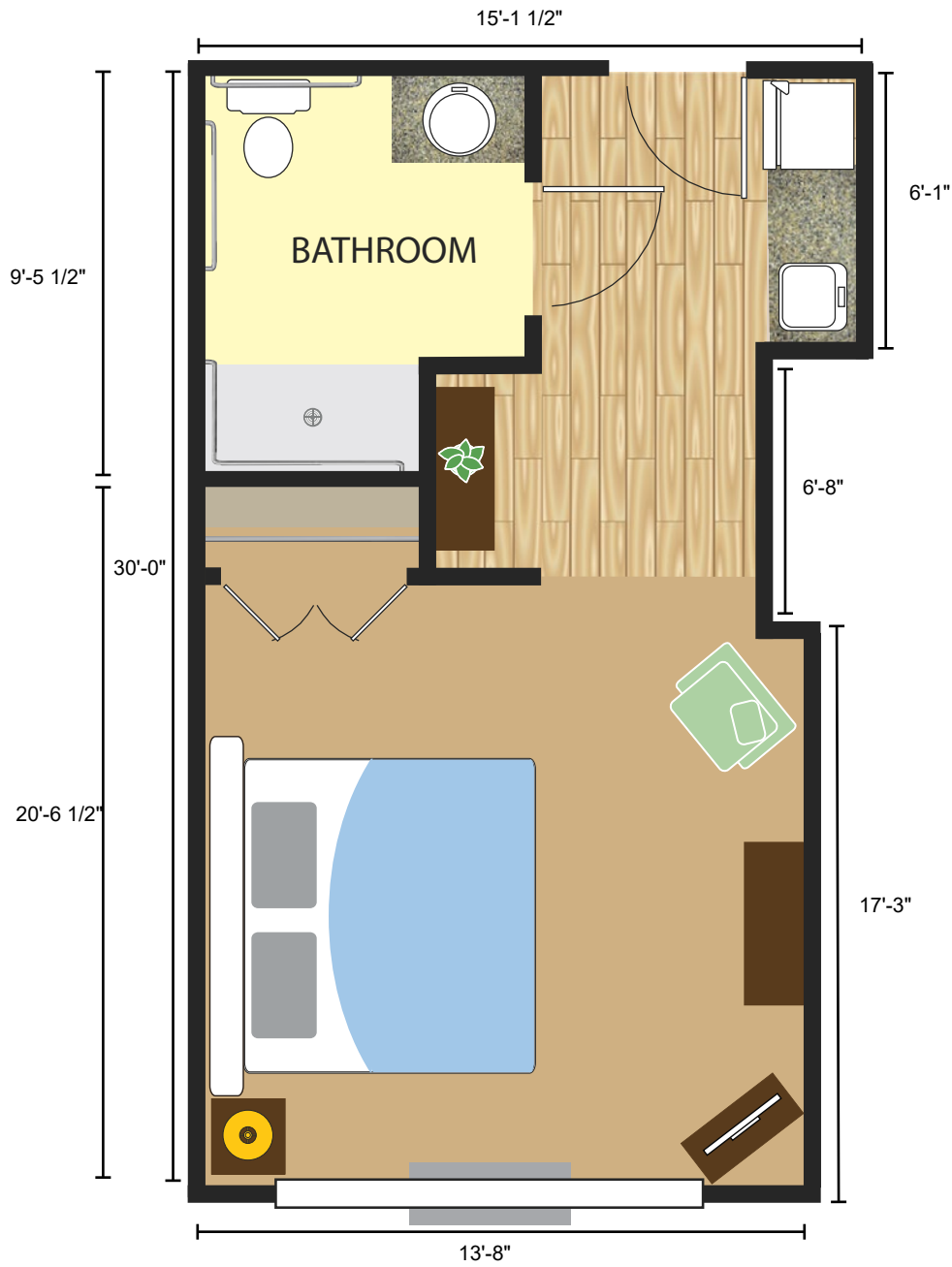
Assisted Living 1-Bedroom Suite
518 SQ FT (APPROXIMATE)

FLOOR PLANS



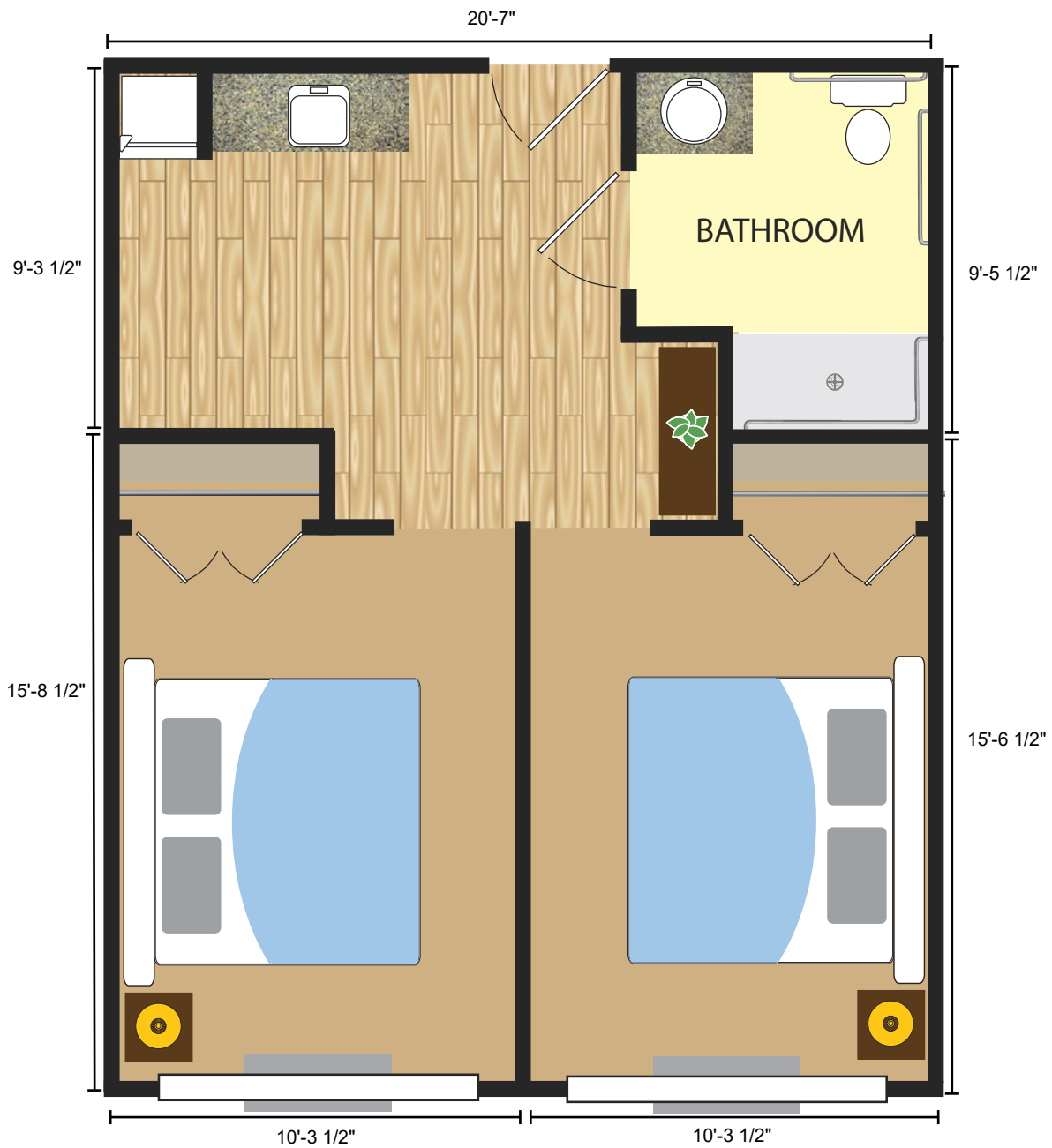
Assisted Living Studio
421 SQ FT (APPROXIMATE)

FLOOR PLANS



Memory Care Studio
421 SQ FT (APPROXIMATE)

FLOOR PLANS



Memory Care Semi-Private Suite

518 SQ FT (APPROXIMATE)